



Emergency Response Center

Empower Instant Response with Integrated Alarm Management

Achieve complete control and rapid response with this comprehensive solution for plant-wide alarm management. It's specially designed to cover alarm notification, statistical analysis, inspections, and shift handover records throughout the entire factory.

Full-factory alarm monitoring at your fingertips, real-time tracking of abnormal events without omission.

Experience full-factory alarm monitoring at your fingertips, ensuring real-time tracking of abnormal events without omission. The "Emergency Response Center (ERC)" is tailor-made for high-risk or high-value factories.

It integrates factory-wide alarms, notification management, statistical analysis, and inspection handovers into a user-friendly platform. ERC addresses the challenge of scattered alarms and events across subsystems, allowing instant monitoring and tracking across the entire factory

ERC seamlessly consolidates and analyzes data, offers diverse notification methods, and provides real-time status updates. ERC enhances alarm response speed and efficiency, minimizing workplace safety crises and losses to the fullest extent.

Benefits



Integrate all factory alarms, providing a single platform for accessing all information



Digitize the management and execution of alarm response SOPs, making tracking and handovers more convenient.



Diverse real-time alarm notification channels to enhance response efficiency.



Visual alarm analysis to help teams gain insights into trends and prevent incidents.

Key features

Factory-Wide Alarm Integration with ERC

Report integration module.

- Information Integration Dashboard
- Statistical Report Generation

Alarm Event Module

- Integration of factory-wide alarm sources
- Alarm processing annotations
- Alarm classification by severity

Shift Handover Module

- Shift handover management
- Processing record tracking

Message Notification Module

- Factory-wide message notification distribution
- Message categorization
- Notification channel management
- Notification history recording

Factory-wide Inspection Module

- Inspection assignment
- Online inspection reporting

An integrated factory-wide alarm platform.

ERC is an integrated alarm platform that supports multiple data sources, seamlessly consolidating alarm information from various on-site subsystems. Its intuitive dashboards provide a quick overview of on-site conditions. Accessible through web browsers on computers, tablets, and mobile phones within the factory, offering real-time online viewing from anywhere.



Real-time logging and tracking of alarm handling status.

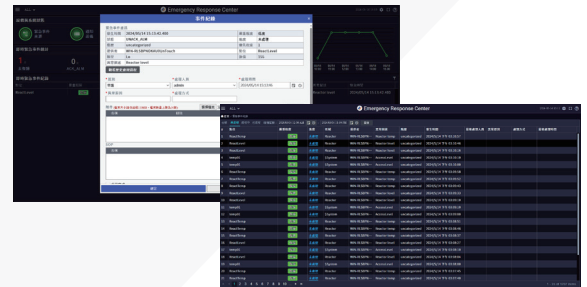
The alarm handling process is recorded and tracked in real-time, digitizing the response SOP for management and ensuring that handover tasks are not overlooked, aiding shift personnel in continuous tracking.

All alarm handling records can be queried within the platform.



Automated alarm statistics and visual presentation

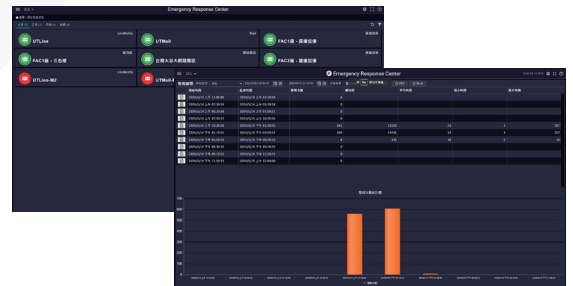
ERC automatically collects and categorizes alarm data, providing graphical reports and trend analysis for more efficient management and insight into alarms and abnormal events.



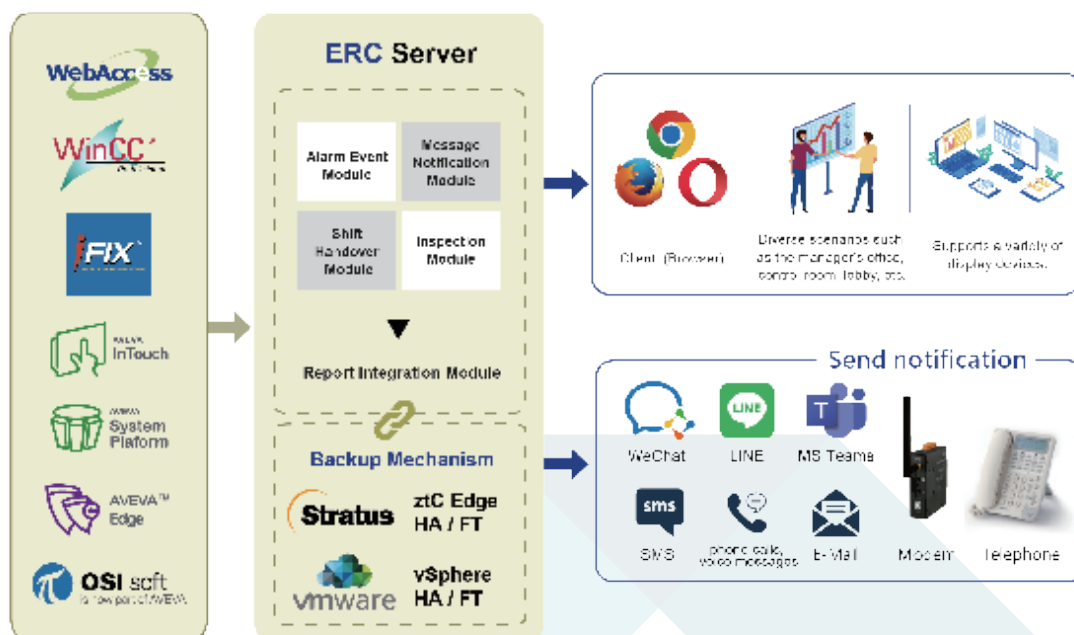
Versatile Alarm Notifications with ERC

ERC provides a range of notification methods, including LINE, WeChat, SMS, internet SMS, phone calls, voice messages, Email, MS Teams, and more. Customize notification criteria for precise delivery to the right personnel.

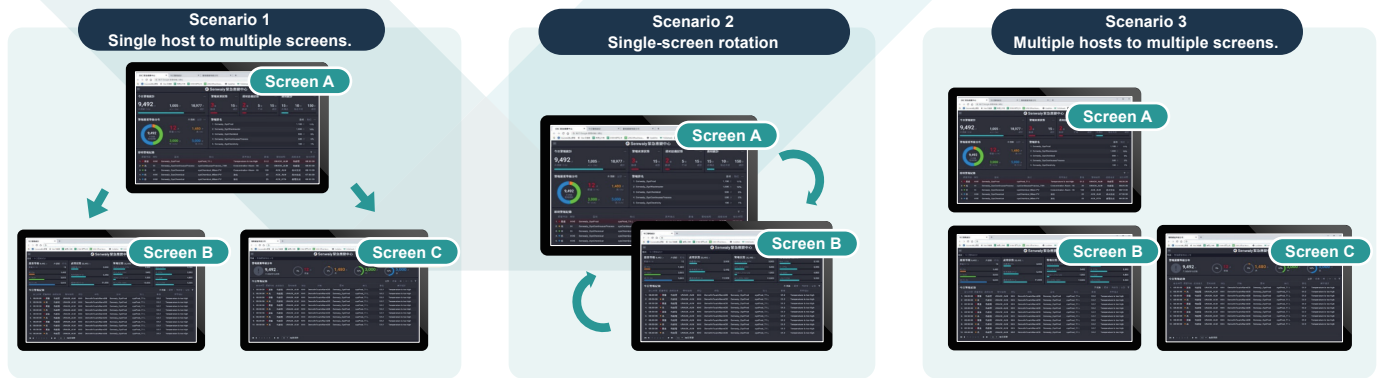
The graphical interface offers a clear view of alarm sources and notification device connections for your team.



System architecture



Supports multiple display modes.



System compatibility



Operating system

- ◆ Windows 10 / 11 Pro
- ◆ Windows Server 2012 R2 or above ;
Standard / Data Center



Supported browsers

- ◆ Microsoft Edge
- ◆ Mozilla Firefox
- ◆ Google Chrome
- ◆ Safari



Database

- ◆ Microsoft SQL Server 2012 or above ;
Express / Standard / Enterprise



Hardware requirements

- ◆ Processor : 2.4 GHz or faster processor
- ◆ RAM : 8 GB or above
- ◆ Free space on hard drive : 500 GB
- ◆ Network : 1 Gigabit Ethernet
- ◆ Display 1920*1080 or higher

※ Content may change without prior notice; Utitech Technology and Senwaiy Tech reserves the right to modify at any time.2024.05

NOW

A perfect time to embark on journey of industrial digitization



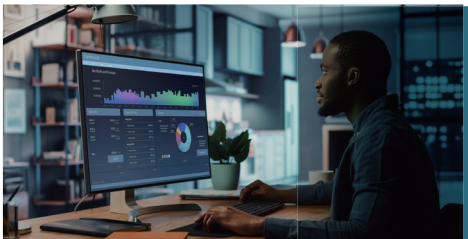
Smart Engineering / Digital twin

Creating a 3D digital twin for the factory, incorporating AR/VR to establish a modernized operational training system.



Performance optimization / Smart manufacturing

By using AI, predict and prevent unexpected equipment failures, thereby extending the equipment's lifespan and achieving the goal of agile production.



Precise monitoring / Optimal operations

Create a cross-domain standardized facility monitoring platform and data visualization monitoring platform. Assisting you in making high-quality decisions.



Data on the cloud / SaaS service

Embrace cloud and SaaS services to break through geographical limitations and uncover opportunities within the data.



Exclusive distributor

 Headquarters: 6F-2, No. 286-9, XinYa Road, Qianzhen District, Kaohsiung City

 E-Mail : ContactPerson@utitech.com.tw **Taipei**  Tel : 886-2-55590388  Fax : 886-2-55590377

 Tel : 886-7-8152813 **Taoyuan**  Tel : 886-3-3272531  Fax : 886-3-3272138

 Fax : 886-7-8153025 **Hsinchu**  Tel : 886-3-5625121  Fax : 886-3-5619805

 Company Website : www.utitech.com.tw **Taichung**  Tel : 886-4-23596393  Fax : 886-4-23596353



R&D

 E-Mail : info@senwaiytech.com  Company Website : www.senwaiytech.com



SENWAIY
Official website



UTITECH
Official website



LINE
technical support