



Alarm Event Center

The ultimate solution for seamless plant-wide alarm integration.

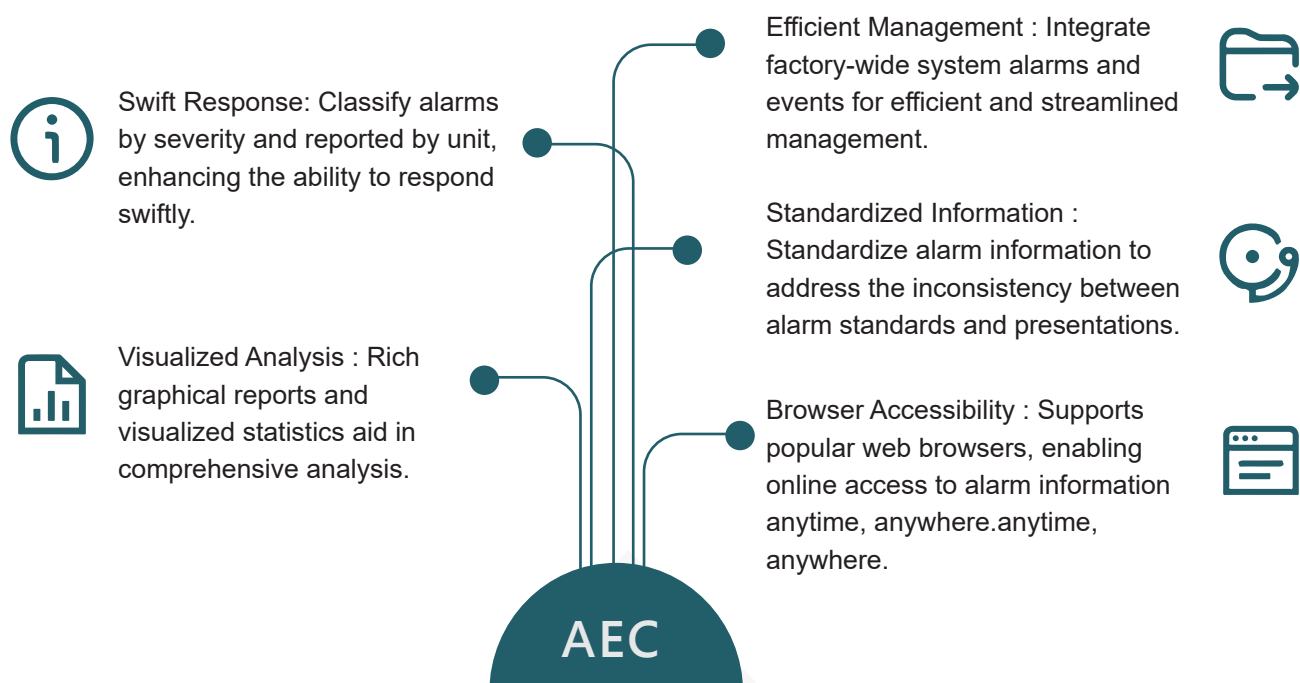
AEC integrates alarms and messages across HMI and SCADA, providing a barrier-free overview. Automatically categorize and grade for efficient management.

End Alarm Dispersion with AEC.

Consolidate factory system alarms with AEC and stay informed anytime, anywhere! AEC provides an integrated alarm management system that consolidates diverse alarm sources, organizes them by priority levels, and enables layered management for swift on-site responses.

Customize alarm notifications through social media platforms, email, text messages, and phone calls. Access real-time alarms, historical data, and statistical reports effortlessly using a web browser, centralizing management of all factory SCADA events and alarms.

Benefits



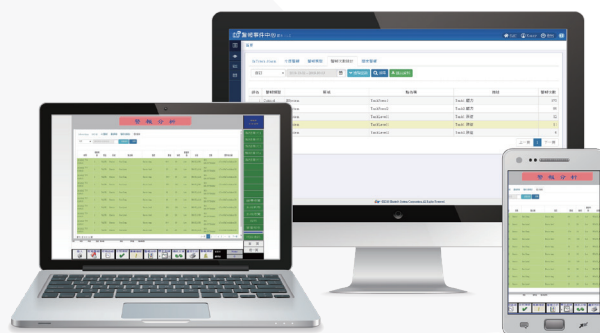
Key features

1. Integration of common alarm data sources:

Consolidate various alarm sources such as PLC, HMI, DCS, SCADA, OPC AE, alarm files, and alarm databases into AEC for statistical and analytical purposes.

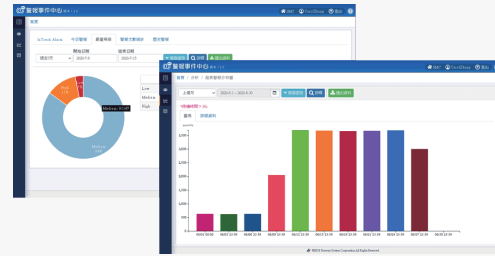
2. Web-based display:

Access alarm dashboards, statistics, records, and distribution information from any browser, enhancing management agility.



3. Visualized Statistics and Analysis :

Automatically compile data into tables, bar charts, pie charts, and more for expedited analysis.



4. Diverse Alarm Notifications :

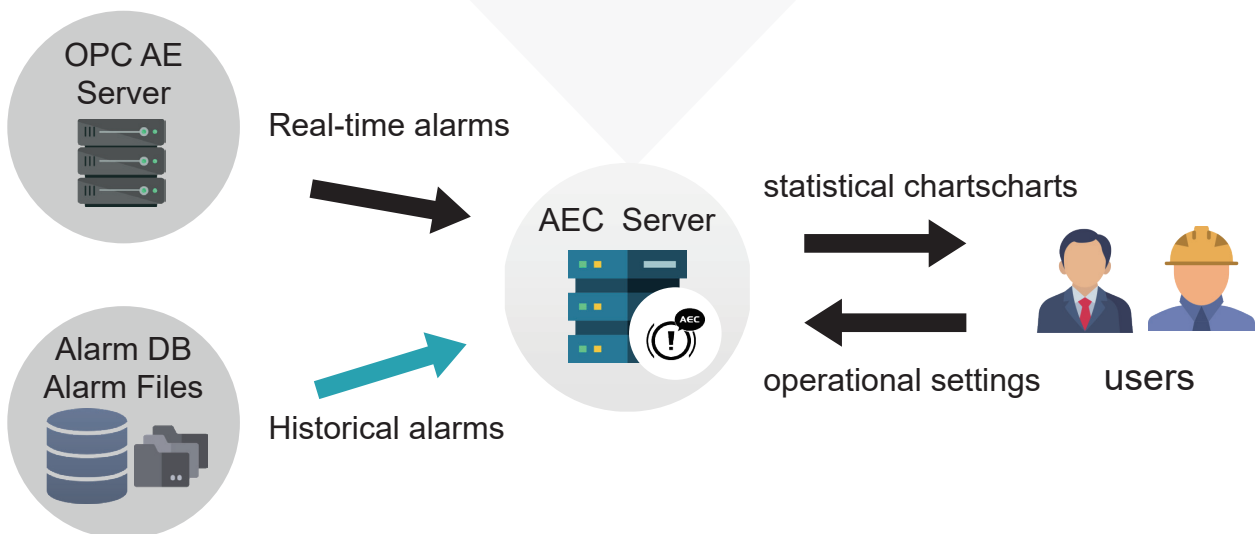
Customize notification content and triggering conditions. Send notifications through like LINE, WeChat, SMS, email, voice calls, Microsoft Teams, and more. This achieves the goals of reducing alarm fatigue and minimizing missed notifications.

※ Requires integration with MGS

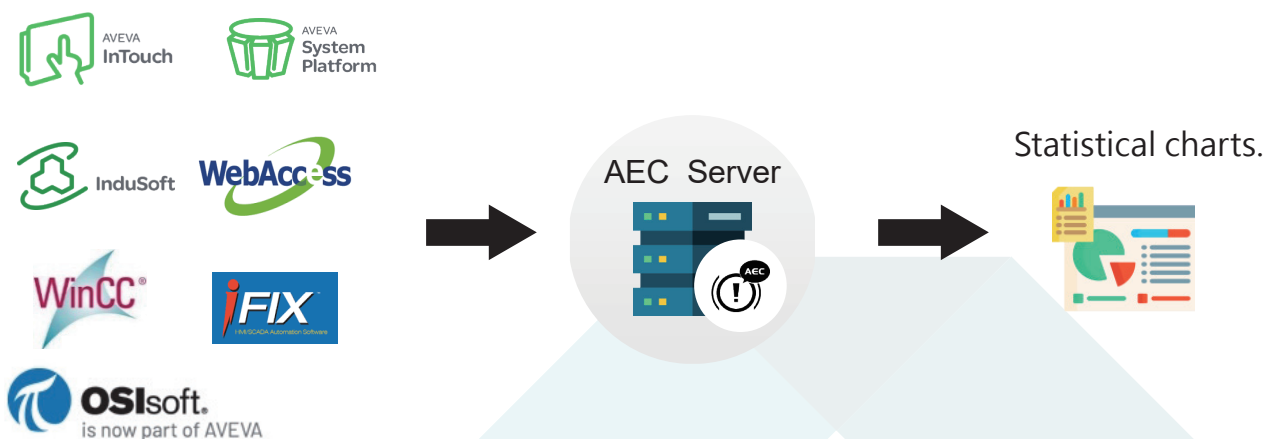
5. Alarm classification management.

Configure alarm levels and their notifications without hierarchy. Assign different colors for quick interpretation.

System architecture



Application architecture



System compatibility



Operating system

- ◆ Windows 10 / 11 Pro
- ◆ Windows Server 2012 R2 or above ; Standard / Data Center



Supported browsers

- ◆ Microsoft Edge
- ◆ Mozilla Firefox
- ◆ Google Chrome
- ◆ Safari



Database

- ◆ Microsoft SQL Server 2012 or above ; Express / Standard / Enterprise



Hardware requirements

- ◆ Processor : 2.4 GHz or faster processor
- ◆ RAM : 8 GB or above
- ◆ Free space on hard drive : 500 GB
- ◆ Network : 1 Gigabit Ethernet
- ◆ Display 1920*1080 or higher

※ Content may change without prior notice

Utitech Technology and Senwaiy Tech reserves the right to modify at any time. 2023.12



Exclusive distributor

 Headquarters: 6F-2, No. 286-9, XinYa Road, Qianzhen District, Kaohsiung City

 E-Mail : ContactPerson@utitech.com.tw **Taipei**  Tel : 886-2-55590388  Fax : 886-2-55590377

 Tel : 886-7-8152813 **Taoyuan**  Tel : 886-3-3272531  Fax : 886-3-3272138

 Fax : 886-7-8153025 **Hsinchu**  Tel : 886-3-5625121  Fax : 886-3-5619805

 Company Website : www.utitech.com.tw **Taichung**  Tel : 886-4-23596393  Fax : 886-4-23596353



R&D

 E-Mail : info@senwaiytech.com  Company Website : www.senwaiytech.com



SENWAIY
Official website



UTITECH
Official website



LINE
technical support